

Brochure

L6D Dual-Purpose License Plate Recognition Camera

One camera, twice the insight.



MOTOROLA SOLUTIONS



Simplified install. Amplified insight.

Your agency needs eyes on critical locations, but the ideal spot for a camera is often limited by the costly need for new infrastructure. What if your camera could adapt to your location, instead of the other way around?

The L6D dual-purpose license plate recognition (LPR) camera's zoom lenses offer unmatched deployment flexibility, capturing high-accuracy LPR data from 30 to 250 feet away. This incredible range means you can leverage existing infrastructure—be it a utility pole or a building down the street to save time and resources.

With two lenses, the L6D delivers accurate, multi-lane LPR data while also capturing high-quality color security video. By combining these critical capabilities into one easy-to-deploy camera, the L6D provides the complete picture needed to understand incidents and accelerate investigations - enhancing public safety and operational efficiency.



Reduce camera clutter

Consolidate your equipment and reduce costs with this single camera that provides both purpose-built license plate recognition and comprehensive video security.

One installation optimizes resource allocation, enhances situational awareness for officers and investigators, and improves evidence gathering for successful case closures, leading to safer communities.



Flexible deployment

One camera with dual zoom lenses adapts for 30-250 ft deployments, eliminating the need to select specific focal lengths.



Data security

Your data is protected with robust cybersecurity features, including an onboard FIPS 140-2 Level 3 compliant TPM and Secure Boot.



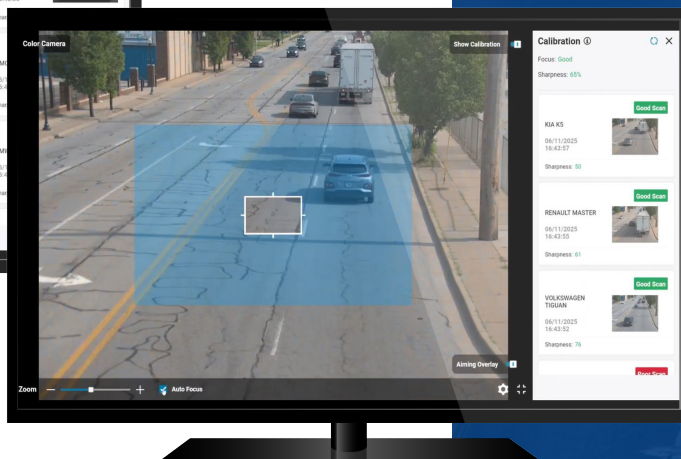
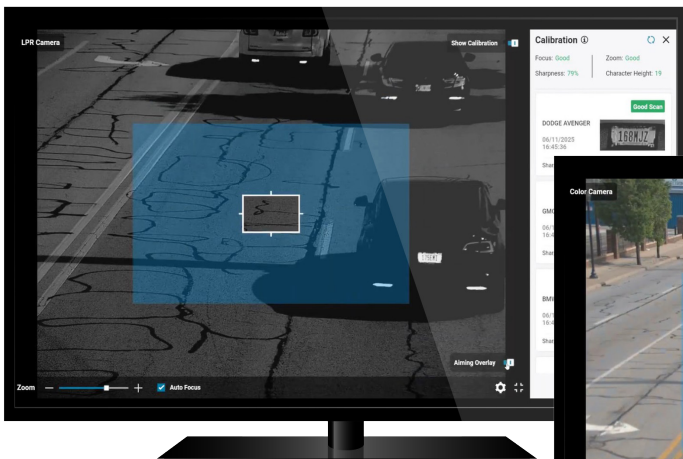
Easy setup

Simply plug in the device and scan a QR code for intuitive mobile configuration, aiming and setup.



Weather resistant

An IP67 rating and a wide operating temperature range (-22°F to 131°F) ensure dependable performance in any weather.





Capture key motion data

The richer and more reliable your vehicle data, the deeper the insights you can unlock.

Details like a vehicle's speed and direction of travel at precise moments and locations enable investigators to build timelines and better understand how events unfolded. The L6D ensures these critical insights are within reach by capturing clear, detailed vehicle images at highway speeds and in all lighting conditions.

Vehicle motion data

In addition to capturing a vehicle's plate, state, make, model, color - you can now gather speed and direction of travel data.

Onboard analytics

Analytics are processed directly on the camera, delivering faster, actionable intelligence with reduced IT overhead.

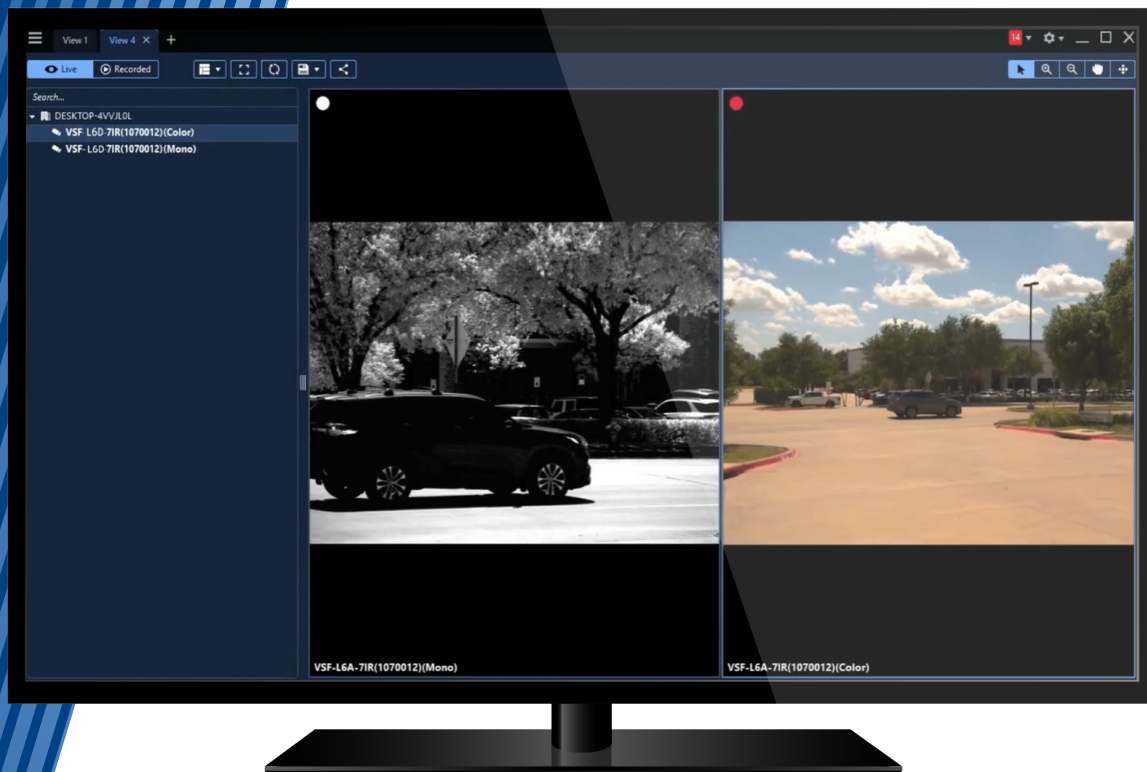
Crisp images

Synchronized global shutter sensors capture clear vehicle images without motion blur, even at high speeds, so critical details are not missed.

Night vision

Accurately scan vehicles and capture details even in complete darkness with synchronized pulsed high-current IR flash.





See the bigger picture

See more than just a vehicle and truly understand the bigger picture during critical incidents.

The L6D delivers trusted LPR accuracy while streaming high-quality video live to your control room. This provides immediate, comprehensive situational awareness of the entire scene - including layout, bystanders, and traffic - driving effective decisions, enhancing officer safety, and improving overall response.

Superior video quality

Global shutter sensors create detailed, richly colored images, delivering the clearest possible visuals of any scene.

Live stream video

Stream video live into CommandCentral Aware for immediate, shared situational awareness as incidents unfold.

Seamless VMS integration

The L6D is ONVIF Profile S conformant which enables easy connection into your agency's existing video management system (VMS), centralizing your visual intelligence.

After-action insight

Examine recorded video footage to gain a deeper understanding of how events unfolded, pinpoint key moments, and gather essential evidence for investigations.





Get more insights from your data

Collecting license plate data is just the beginning; true value lies in the insights it reveals.

Our LPR cameras, including the L6D, feature industry-leading software that transforms raw data into actionable intelligence. Manage hot lists and alerts, conduct sophisticated searches, and leverage patented analytics to uncover critical patterns and associations. You maintain complete control over your data, with agency-defined retention policies and secure sharing options to maximize its utility and impact across your operations.

Hot list & alerts

Build custom hot lists, subscribe to shared intelligence feeds, and configure instant alerts across devices to act on critical vehicle information immediately.

Patented location analytics

Uncover deeper connections by identifying vehicle associations, predicting likely areas of vehicle presence, and revealing critical patterns.

Advanced vehicle searches

Go beyond basic lookups. In addition to searching by full or partial plate, search by location, and filter by year, make, model, color to pinpoint specific vehicles or identify trends.

Comprehensive data management

Securely manage your data with agency-defined retention policies, control sharing permissions, and oversee all your camera systems from a single, centralized platform.



Streamline investigations with AI

Streamline your vehicle investigations and find critical information faster with Assist in VehicleManager.

This AI-powered tool enhances traditional search methods with natural language search. Simply type a description of the desired vehicle (e.g., "Gray Chevy Tahoe seen this morning" or "pickup truck with a ladder rack") into the intuitive Assist panel. The conversational interface helps iteratively refine the search with additional details, speeding up the process of locating vehicles of interest - even without a license plate. Assist in VehicleManager operates exclusively and securely on your agency's data within VehicleManager, and all queries are fully auditable for transparency.

No license plate? No problem.

Find vehicles without a license plate. Just describe the vehicle of interest in natural language - make, model, color - and Assist will find (and map) matching images.

But don't stop there...

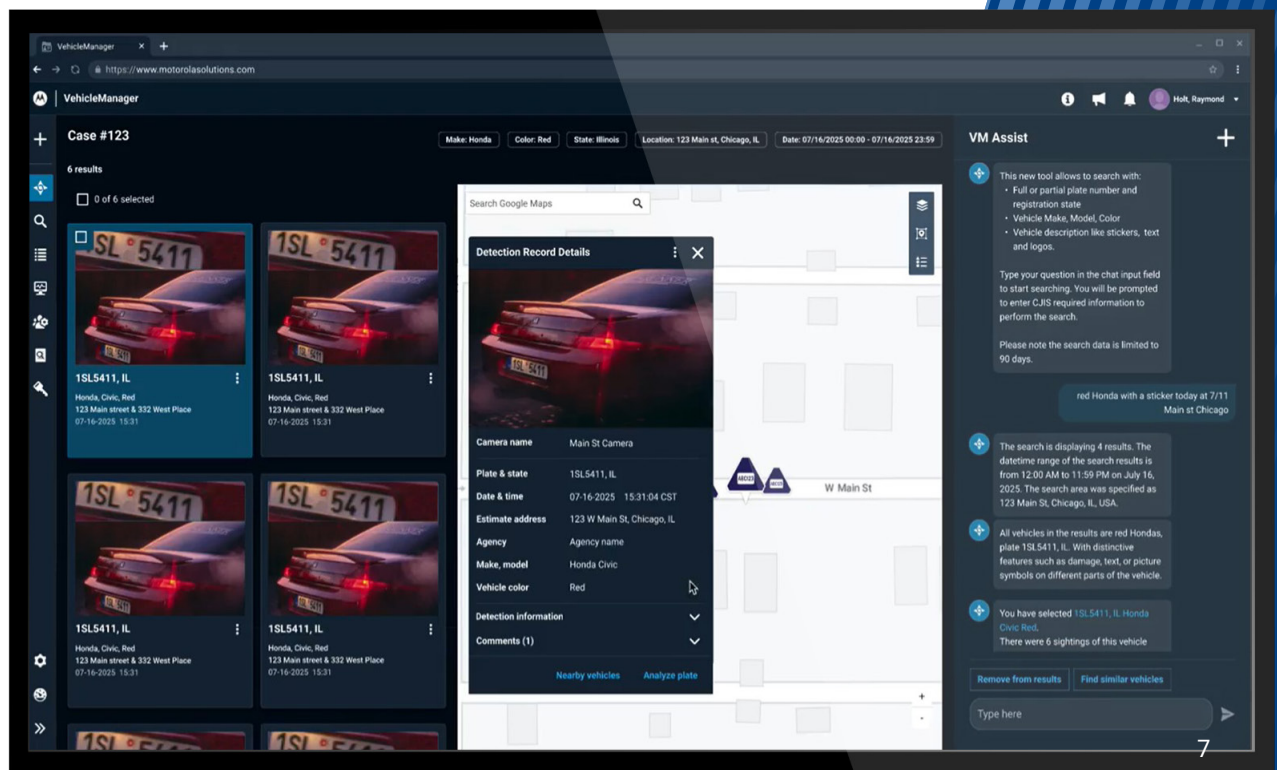
Assist AI recognizes additional aspects of the vehicle - like accessories, damage, and promotional writing or bumper stickers - to help narrow your search.

Focus your search with geoboundaries

If you're focused on a particular geographic region, simply draw the boundary on the map. This narrows the search results to just vehicles spotted in that area.

Vehicle environment context

Assist AI recognizes the vehicle's surroundings as well. If you're looking for a vehicle spotted on a highway or near a park, you can further refine the results.





Get the most out of your solution

Our service options keep your team and system working so you can maintain the safety of the people you serve.

Expert training

Whether it's generating new leads or successfully following up on current ones, our training team is ready to help. Composed of retired and former law enforcement personnel, the team brings well over a hundred years of investigative experience to the table along with free training available in-person and online.

Services & support

We offer a wide range of services, from included support to optional upgrades, designed to deliver peak performance for your LPR system. With remote startup and commissioning and routine security updates, our dedicated team is available to address any technical concerns with prompt assistance.

Hardware warranty

Maintain efficiency and reliability with a one year manufacturer warranty from ship date, with the option to purchase an additional four years for a total five year warranty.





Get two-times the insight with one camera.
Discover what the L6D can do for your agency today.

To learn more, visit: www.motorolasolutions.com/L6D



Motorola Solutions, Inc. 500 West Monroe Street, Chicago, IL 60661 U.S.A. motorolasolutions.com

Available only in North America

MOTOROLA, MOTO, MOTOROLA SOLUTIONS and the Stylized M Logo are trademarks or registered trademarks of Motorola Trademark Holdings, LLC and are used under license. All other trademarks are the property of their respective owners. ©2025 Motorola Solutions, Inc. All rights reserved. 07-2025 [LD03]