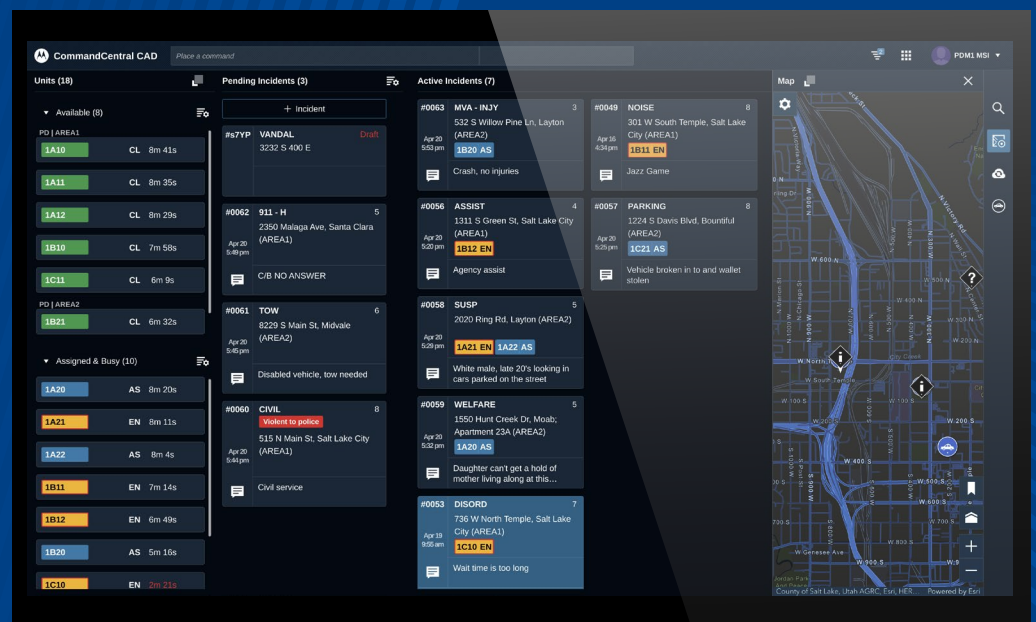


# CAD Web Client Continuity Services

## Efficient, intuitive and cost-effective web-based CAD failover for PSAPs

Planning for the possibility of losing computer-aided dispatch (CAD) operations is one of the most critical concerns your organization has to grapple with. For a long time, disaster recovery and failover options for comprehensive CAD systems like PremierOne have been complex and costly to implement.

In environments where success is measured in seconds, CAD Web Client Continuity Services provides PSAPs with a cost-effective and easy-to-use failover system. Continuity Services reduces IT costs as a hybrid-delivered service that enables activation within moments. This prevents operational delays, and provides immediate and seamless access to your agency's critical data through a familiar and easy-to-use CAD client.





### Reduce costs and complexity

Continuity Services is a cloud-delivered system that leverages the CAD Web Client already in use by PSAPs to continue dispatch operations during the downtime of their typical CAD Client. Decrease IT costs and complexity with services that do not require costly hardware and software to implement.



### Activate within seconds

Continuity Services can be activated with the push of a button, preventing delays in CAD operations. The system immediately syncs with an organization's data and configurations, so incident response remains nearly uninterrupted. Switching to Continuity Service and back to the PremierOne CAD client is simple to execute and verify.



### Intuitive and easy to use

Continuity Services leverages your organization's data and configurations through the CAD Web Client for seamless operational failover, with intuitive operations that reduce the need for extensive training.

## Fast and easy failover activation

Light and intuitive to use, the CAD Web Client is designed to complement traditional CAD operations. From training new dispatchers who are more familiar with web-based user experiences to use in remote dispatch situations like large events, the CAD Web Client extends the capture and communication capabilities in all types of environments.

Now the CAD Web Client adds a layer of resiliency to your PSAP processes for planned and unplanned outages.

- For a site with 1,000 on-duty units, 300 non-closed incidents failover sync should take under five minutes assuming standard broadband internet speed.
- Failback to the primary system will take under two minutes even for hundreds of incidents and units updated during failover.

To learn more, visit: [www.motorolasolutions.com/premierone-cad](http://www.motorolasolutions.com/premierone-cad)



Motorola Solutions, Inc. 500 West Monroe Street, Chicago, IL 60661 U.S.A. [motorolasolutions.com](http://motorolasolutions.com)

MOTOROLA, MOTO, MOTOROLA SOLUTIONS and the Stylized M Logo are trademarks or registered trademarks of Motorola Trademark Holdings, LLC and are used under license. All other trademarks are the property of their respective owners. ©2025 Motorola Solutions, Inc. All rights reserved. 08-2025 [EV02]