

CommandCentral Aware

Offer comparison guide

CommandCentral Aware has subscription tiers to fit your agency's needs and budget. Our tiering structure allows you to grow your real-time intelligence capabilities in a way that meets your workflow needs.

Whether you're getting started building a real-time intelligence operation or growing your capabilities, we have a plan for you. Start by maximizing the investments of your agency's existing technologies with the CommandCentral Aware Standard offer. Scale situational awareness and augment workflows through with Plus tier and comprehensively grow your agency's real-time intelligence capabilities.

Use the following matrix to directly compare the core capabilities of CommandCentral Aware to decide which might be best for your agency.

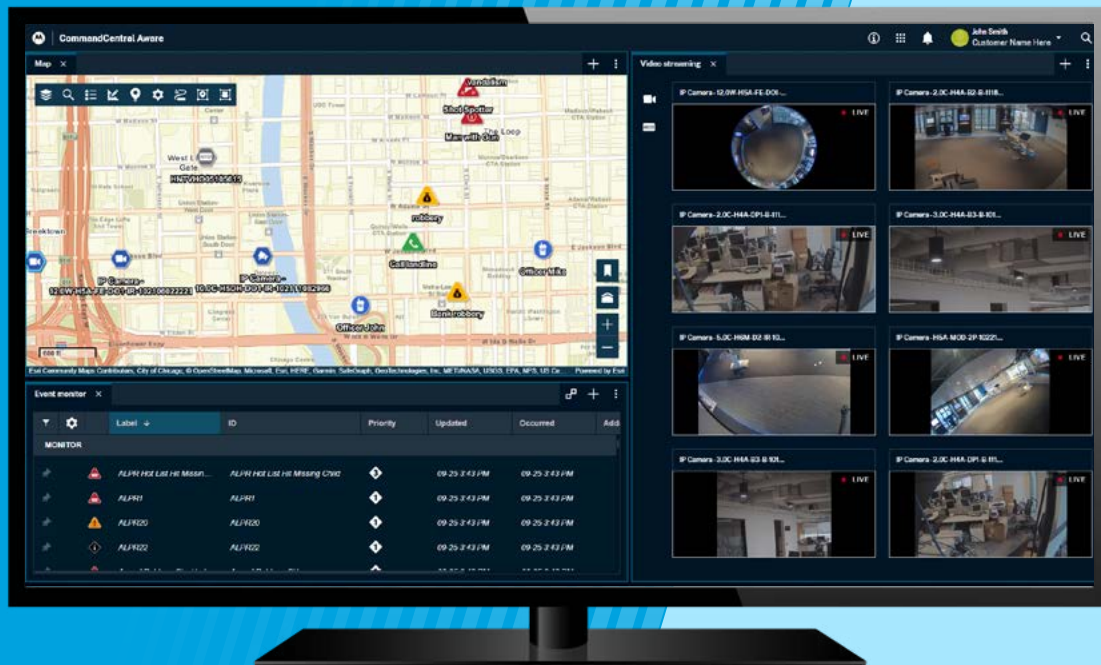
COMMANDCENTRAL AWARE OFFER COMPARISON MATRIX	STANDARD	PLUS	FedRAMP™	CCCS*
ESSENTIALS				
Esri-based mapping with custom layers	✓	✓	✓	✓
Integrated building floor plans**	✓	✓	✓	✓
Real-time traffic and weather radar	✓	✓	✓	
Configurable CAD-style event monitor	✓	✓	✓	✓
Geographic zones of interest (geofences)	✓	✓	✓	✓
Workflow automation rules engine	✓	✓	✓	✓
Tactical collaboration and drawing tools	✓	✓	✓	✓
Historical incident recreation and replay	✓	✓	✓	✓
Documented third party data ingest API		✓		
CONTINUED ON NEXT PAGE >				

*Canadian Centre for Cyber Security (CCCS)

**Not all floor plan providers are available in all regions



MOTOROLA SOLUTIONS



COMMANDCENTRAL AWARE OFFER COMPARISON MATRIX	STANDARD	PLUS	FedRAMP™	CCCS*
RESOURCES				
Broadband-enabled radio location, detail and status	✓	✓	✓	✓
Land mobile radio (LMR) location, detail and status		✓		
Body-worn camera and in-car video location and detail	✓	✓		✓
Drone location and detail	✓	✓		
Smartphone app location, detail and status	✓	✓		
LPR camera location, detail and hot hit alerts	✓	✓		
Resource affiliation and unit management	✓	✓	✓	✓
Patrol checkpoint creation and alerts	✓	✓		
CAD-provided unit location, detail and status		✓		
Community camera registry map layer	✓	✓		
AVL-equipped vehicle location and detail	✓	✓		
EVENT SOURCES				
Panic button and tip location and details	✓	✓		
9-1-1 call location and details		✓		
CAD incident location and details		✓		
Gunshot detection location and details		✓		
CONTINUED ON NEXT PAGE >				

*Canadian Centre for Cyber Security (CCCS)



COMMANDCENTRAL AWARE OFFER COMPARISON MATRIX	STANDARD	PLUS	FedRAMP™	CCCS*
VIDEO SOURCES				
Body-worn camera and in-car video livestreaming	✓	✓		✓
Drone livestreaming	✓	✓		
Public livecam streaming (via direct connection)	✓	✓		
Third party IP cameras livestreaming (via Safety Hub)	Optional add-on	Optional add-on		
Motorola Solutions VMS livestreaming	✓	✓		
Third party VMS livestreaming		✓		
VIDEO STREAMING				
Custom camera grouping and labeling	✓	✓		
Camera mapping and analytic alerts	✓	✓		
Native pan-tilt-zoom camera controls	✓	✓		
Video clip and snapshot export options	✓	✓		
Granular viewing and feature permissions	✓	✓		
COMMUNICATIONS				
Embedded email sharing	✓	✓	✓	✓
Radio console communications		✓		
SEARCH & QUERY				
Google search on text highlight	✓	✓		
LPR records database search	✓	✓		
PROTECTED PLACES (OPTIONAL ADD-ON)				
Community registration online portal	✓	✓		
Online portal theme customization	✓	✓		
SECURITY				
CJIS security policy compliant	✓	✓	✓	N/A
Annual SOC 1 and 2 security auditing	✓	✓	✓	✓
ISO 27001, 27017 and 27018 certified	✓	✓	✓	✓

This list is not exhaustive. Check with your Motorola Solutions sales representative for a comprehensive list of features, supported integration types and specific compatible vendors.

To learn more, visit: www.motorolasolutions.com/aware



Motorola Solutions, Inc. 500 West Monroe Street, Chicago, IL 60661 U.S.A. [motorolasolutions.com](https://www.motorolasolutions.com)

This offer guide is for CommandCentral Aware availability in the U.S.

MOTOROLA, MOTO, MOTOROLA SOLUTIONS and the Stylized M Logo are trademarks or registered trademarks of Motorola Trademark Holdings, LLC and are used under license. All other trademarks are the property of their respective owners. ©2025 Motorola Solutions, Inc. All rights reserved. 04-2025 [EV22]