



Shared awareness for public safety and community

CommandCentral Aware + Rave Mobile Safety Panic Button

Ecosystem
Connections

When an emergency happens at your community's most vulnerable locations, getting the right information into the right hands is crucial. Any delay in incident response can have devastating consequences. Public safety and vulnerable community locations such as schools, have siloed information sources, making it difficult to share critical information in real time. Responders need eyes on scene quickly in order to provide a more informed response.

How it works

The Rave Mobile Safety Panic Button and CommandCentral Aware together are a seamless solution to help keep your schools and community safe. The Panic Button triggers an alert that is immediately centered on the CommandCentral Aware map alongside customizable layers including your campus or building map and other geospatial intelligence sources. CommandCentral Aware receives the alert, including GPS coordinates, activator's profile and type of incident. Your agency can remotely livestream nearby camera feeds to get eyes on the scene faster.

Key benefits



Receive panic button alerts

Receive real-time alerts of a panic button press on the CommandCentral Aware map along with 9-1-1 calls, nearby cameras, units and other resources and events for better situational awareness.



View type of incident

See details on the panic alarm including type of incident (active assailant, fire, police, 9-1-1) as well as the GPS coordinates, campus location, time stamp and activator profile information.



Livestream nearby camera feeds

Remotely livestream camera feeds from surrounding locations to assess the situation faster and provide a more informed response.

Connected products and features

Customize alerts

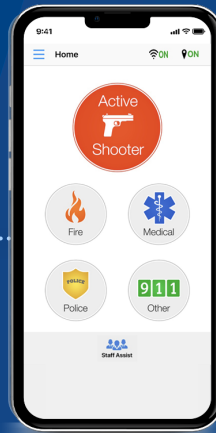
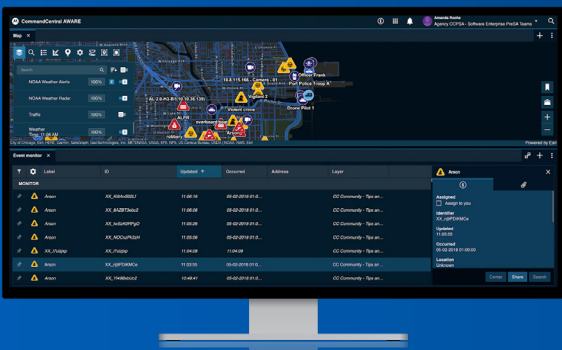
Adjust the icon, sound, priority of alerts (e.g., set proximity to a school) and personnel notified based on your workflow.

Integrate floor plans

Upload floor plans to display on the map and filter between layouts.

Tailor building/campus cameras

Plot and configure camera location, name and alias based on building or campus environments.



In action

1. A dispatcher sees an alert on the CommandCentral Aware map from an activated Rave Panic Button at a local school of an unknown intruder.
2. They also see a 9-1-1 call alert. They create an incident in PremierOne CAD which too populates on the map and initiates outbound communications.
3. The dispatcher radios the school resource officer (SRO) with details.
4. In CommandCentral Aware, the dispatcher receives and views school floor plans and maps to precisely direct the SRO to the panic alert location.
5. The SRO is able to intercept the intruder and mitigate the potential threat without incident. The subject is escorted off premises*.

* Integrations with third party mobile panic buttons with CommandCentral Aware are available.

At Motorola Solutions, we're solving for safer.

We build and connect technologies to help protect people, property and places. Our solutions enable the collaboration between public safety agencies and enterprises that's critical for a proactive approach to safety and security. Learn more about how we're solving for safer communities, safer schools, safer hospitals, safer businesses – safer everywhere at motorolasolutions.com/aware motorolasolutions.com/panic-button



CommandCentral
Aware



Rave Mobile Safety
Panic Button



Managed and
Support Services



Motorola Solutions, Inc. 500 West Monroe Street, Chicago, IL 60661 U.S.A. motorolasolutions.com

MOTOROLA, MOTO, MOTOROLA SOLUTIONS and the Stylized M Logo are trademarks or registered trademarks of Motorola Trademark Holdings, LLC and are used under license. All other trademarks are the property of their respective owners. ©2025 Motorola Solutions, Inc. All rights reserved. 01-2025 [SS04]